



DR. GUSTAVO PASSARELLI PETRIS

Professor Gustavo Passarelli Petris holds a Master of Science (MSc) in Clinical Dentistry from the University of Passo Fundo in Passo Fundo, Brazil. Dr. Petris runs a private practice in Paraná, Brazil, is an international lecturer and speaker, and is a member of the Operato KOL teaching team.



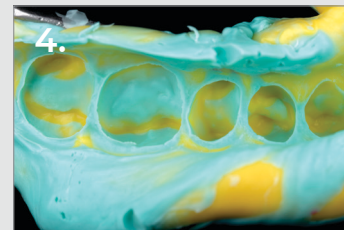
1. Initial situation.



2. Removal of restorations with rubber dam isolation.



3. IDS (Immediate Dentin Sealing) and resin coating followed by margin management. Sandblast with aluminum oxide.



4. Double step impression for cast construction.



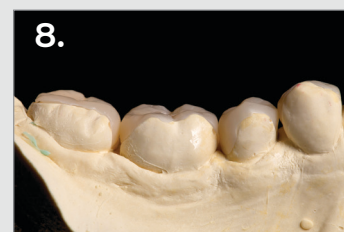
5. Cast model.



6. FORMA™ composite A2B used as a single shade.



7. Occlusal view of restorations on the cast model.



8. Buccal view of restorations on the cast model.



9. Silane applied as union agent.



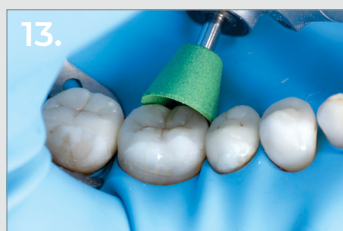
10. Indirect composite restorations dry fit.



11. Ultra-Etch™ 35% phosphoric acid etchant was used with the total-etch method.



12. Luting with low viscosity condensable composite resin.



13. Finishing and polishing with Jiffy™ Original Composite System.



14. Immediate result with rubber dam isolation.



15. 1 year follow-up.

