



DR. RAFAEL CALIXTO

Professor Rafael Calixto holds a Master of Science (MSc) and Doctor of Philosophy (PhD) in Restorative Dentistry from UNESP in São Paulo, Brazil. He has authored the book *Direct-Composite Veneers* and runs a private practice in São Paulo, Brazil. Dr. Calixto is an international speaker, teaches the Dentistry Specialization course at FAEPO in São Paulo, and coordinates the Specialization Course in Dentistry at the Brazil Association of Dentistry in Alagoas, Brazil.



1. The patient desired to close the diastema between the central incisors and make some shape improvements to the incisors and canines.



2. After removing the previous restoration, a modified isolation with a rubber dam and cords was done.



3. The palatal shell was reproduced using a silicone wall and the FORMA composite Incisal shade.



4. The deep dentin layer was placed using the highly opaque FORMA composite A3D shade.



5. Entire superficial dentin and bevel area covered with FORMA composite A1B shade.



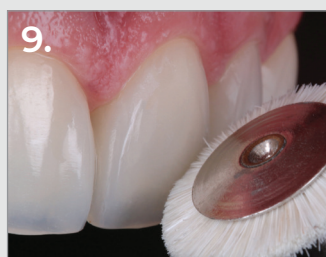
6. Enamel bleach shade XWE.



7. Jiffy™ polishing disks used for initial buff and polish.



10. Final Result.



9. Jiffy™ Goat Hair Brush and Ultra-dent™ Diamond Polish Mint used for the final polish.

